

Mynute VHE

High efficiency open vent boiler

RANGE 12VHE - 15VHE - 20VHE

—
SEDBUK 'A' RATED

—
COMPACT DIMENSIONS

—
TOP AND BOTTOM PIPE
CONNECTIONS



Mynute VHE

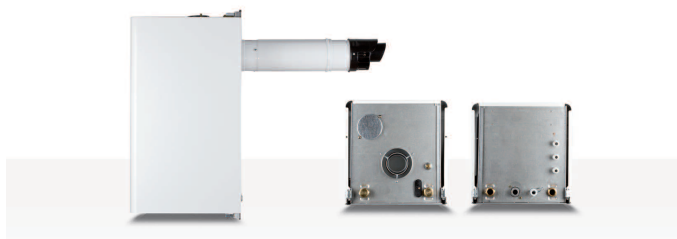
High efficiency open vent boiler

SPECIFICATIONS	Mynute 12VHE	Mynute 15VHE	Mynute 20VHE
Central Heating			
Heat input (kW)	12	15	20
Maximum heat output @ 60/80 °C (kW)	11.74	14.60	19.68
Maximum heat output @ 30/50 °C (kW)	12.64	15.74	21.16
Min static head	1m	1m	1m
Max static head	30m	30m	30m
Min flow rate at max output	500 l/h	500l/h	500l/h
Weight			
Dry weight (kg)	25	25	29
Connections			
Flow & return	22mm	22mm	22mm
Gas	15mm	15mm	15mm
Condense	21mm	21mm	21mm
Electrical			
Voltage (V/Hz)	230/50	230/50	230/50
Flue Details (concentric)			
Maximum horizontal flue length (60/100mm)	7.8m	7.8m	7.8m
Maximum vertical flue length (60/100mm)	8.8m	8.8m	8.8m
Maximum horizontal flue length (80/125mm)	25m	25m	20m
Maximum vertical flue length (80/125mm)	30m	30m	30m
Flue Details (twin pipes)			
Maximum horizontal flue length (80mm/80mm)	40m/40m	40m/40m	40m/40m
Maximum vertical flue length (80mm/80mm)	40m/40m	40m/40m	40m/40m
Efficiency			
SEDBUK (%)	90.3 (A)	90.0 (A)	90.5 (A)
NOx Class	5	5	5

ENERGY SAVING CONTROLS AND OPTIONS

Description	Code
Weather compensation control	2359259
*Rear flue terminal (12kW and 15kW only)	533

REAR FLUE AND TOP AND BOTTOM PIPE CONNECTIONS



SEDBUK 'A' rated.

Reduces running costs by up to 35% more than a conventional boiler, helping to safeguard the environment.

New aluminium heat exchanger. This heat exchanger provides excellent thermal transfer and anti corrosion properties and is fully recyclable.

Low pressure loss reduces noise and increases pump performance.

Factory set and tested for easy commissioning, no need to check burner pressure or carry out a combustion analysis check.

Automatic modulation eliminates the need to range rate the boiler.

Low NOx - Class-5 performance.

Top and bottom pipe connections for flexibility and ease of installation.

Requires only 1-metre minimum static head.

Anti-cycling control reduces on/off cycling, increasing efficiency of the boiler and reducing fuel costs.

Built-in thermo-regulation to increase further fuel efficiency. Attach the outside weather compensation control to maximise energy efficiency.

Built-in frost protection, protects the appliance from damage during periods of cold weather. External pump must be connected directly to the boiler to ensure this function operates.

Versatile, horizontal, vertical or rear flueing* options – using Vokèra's concentric or twin flue systems – enable the boiler to be sited almost anywhere in the home. Flue type certification also permits Mynute VHE to be used with Vokèra's 80mm PP Flexible flue liner and B23 applications.

Pump anti-block eliminates the risk of pump seizure during periods of inactivity.

Designed for easy installation.

Compatible with Zenith Solar thermal.

Unique "Autostop" function: Mynute VHE has the built-in disabling function (Autostop) that automatically changes the current operating mode, and moves it permanently into the standby mode. This automatic function will only operate after a pre-defined period of time has elapsed and if it has been activated during commissioning.

Intuitive control panel ensures end-users can easily operate and adjust the appliance.

Purge cycle feature. Boiler will automatically run a two minute purge cycle when the boiler is switched on for the first time before the burner ignites to expel any air that may be present in the system.

Can be converted to LPG with LPG kit.



Registered Address: Vokèra Ltd Borderlake House, Unit 7 Riverside Industrial Estate, London Colney, AL2 1HG

Email: enquiries@vokera.co.uk Web: www.vokera.co.uk
Vokèra Ireland West Court, Callan, Co Kilkenny

Tel: 0844 391 0999 Fax: 0844 391 0998
Tel: 056 7755057 Fax: 056 7755060

Vokèra Limited reserve the right to change specification without prior notice. Consumers statutory rights are not affected. A Riello Group Company.
Company Reg No.: 1047779

Vokèra is a licensed member of the Benchmark scheme which aims to improve the standards of installation and commissioning of domestic hot water systems in the UK.